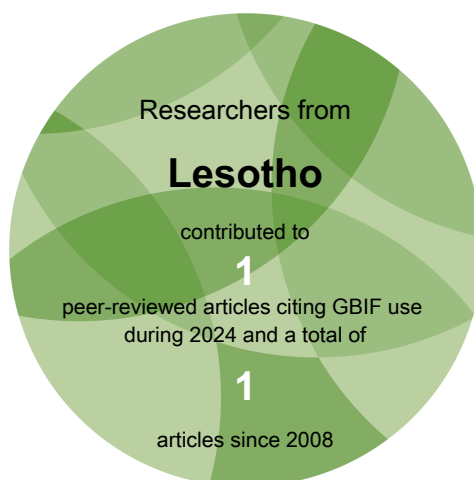


generated January 2025

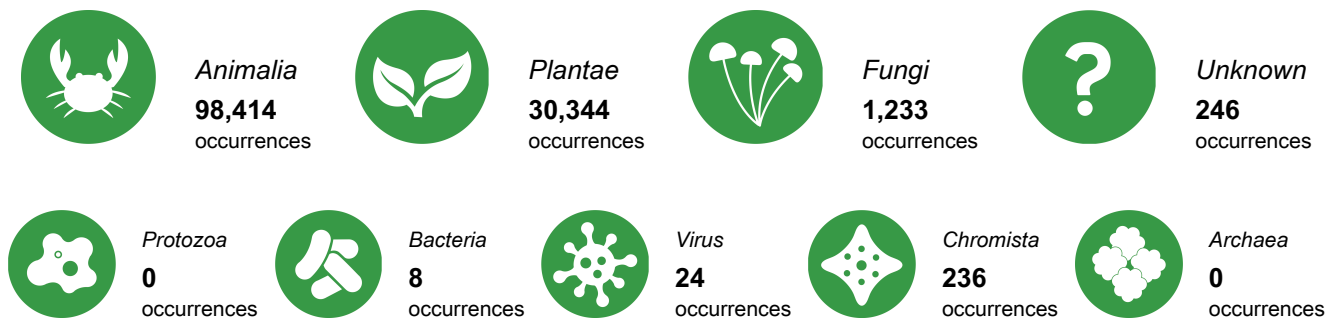
## Lesotho

This report provides a series of summary charts, statistics and other details about the mobilization and use of open-access species data through the GBIF network, relating to users and participating institutions in Lesotho. These metrics show status at the time of report generation, unless otherwise noted. Taken together, the elements of this report can help guide and measure progress toward the information needs for biodiversity research, as well as for national commitments on biodiversity and sustainable development.

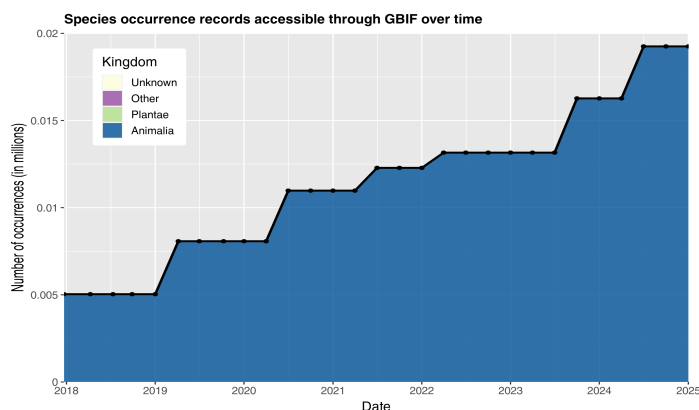
### ► Access and usage



### ► Data availability in Lesotho



### ► Data mobilization

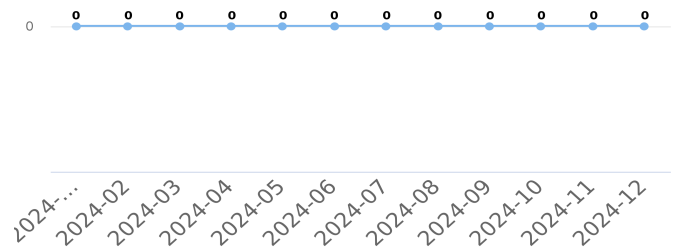
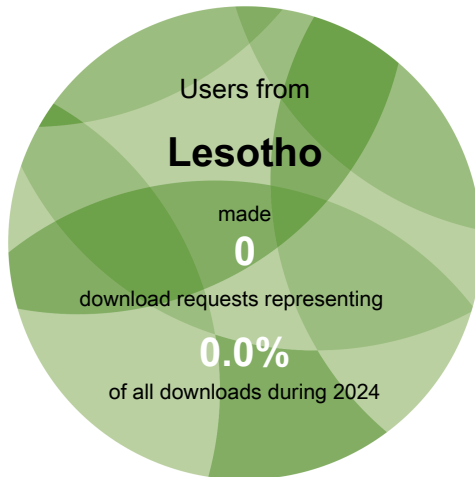


Number of records published by institutions in Lesotho,  
categorized by kingdom



## Access and usage

### Data downloads on GBIF.org from users in Lesotho



Monthly downloads requested by users in Lesotho

### Recent peer-reviewed articles using GBIF-mediated data by co-authors based in Lesotho

The GBIF Secretariat maintains and reports on an ongoing literature tracking programme, giving priority to substantive uses of GBIF-mediated data in peer-reviewed literature while identifying the countries or areas of the authors' institutional affiliations. The citations below represent the five most recent journal articles with at least one co-author from Lesotho.

Those interested in assisting the Secretariat in identifying additional peer-reviewed uses of GBIF-mediated data may forward relevant citations to [comms@gbif.org](mailto:comms@gbif.org).

Mokotjomela, Vukeya, Mbele *et al.* (2024) The alien and invasive plant species that may be a future conservation threat to the Lesotho Afro-alpine Drakensberg area. *Regional Environmental Change*.  
<https://doi.org/10.1007/s10113-024-02326-0>

See all research from this country or area  
[gbif.org/country/LS/publications/from](https://gbif.org/country/LS/publications/from)



## Data availability

### Total data available for selected taxonomic groups in Lesotho



**Mammals**  
**239**  
occurrences



**Birds**  
**80,164**  
occurrences



**Bony fish**  
**605**  
occurrences



**Amphibians**  
**643**  
occurrences



**Insects**  
**15,576**  
occurrences



**Reptiles**  
**251**  
occurrences



**Molluscs**  
**73**  
occurrences



**Arachnids**  
**380**  
occurrences



**Flowering plants**  
**26,371**  
occurrences



**Ferns**  
**872**  
occurrences



**Gymnosperms**  
**18**  
occurrences



**Mosses**  
**2,723**  
occurrences



**Sac fungi**  
**1,173**  
occurrences



**Basidiomycota**  
**26**  
occurrences

Mammals = Class *Mammalia*  
Birds = Class *Aves*  
Bony fish = Superclass  
*Osteichthyes* p.p.  
Amphibians = Class *Amphibia*

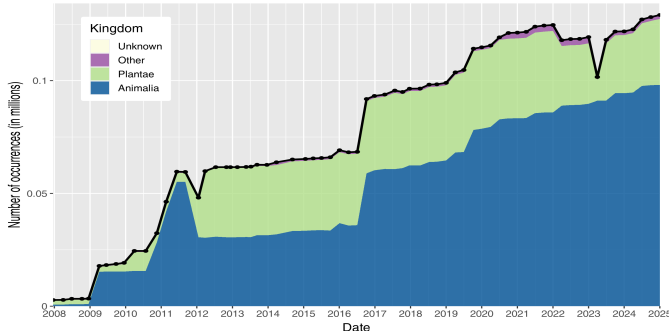
Insects = Class *Insecta*  
Reptiles = Class *Testudines*,  
*Sphenodontia*, *Squamata* &  
*Crocodylia*  
Molluscs = Phylum *Mollusca*

Arachnids = Class *Arachnida*  
Flowering plants = Phylum  
*Magnoliophyta*  
Gymnosperms = Superclass  
*Gymnospermae*

Ferns = Phylum *Pteridophyta*  
Mosses = Phylum *Bryophyta*  
Sac fungi = Phylum *Ascomycota*  
Basidiomycota = Phylum  
*Basidiomycota*

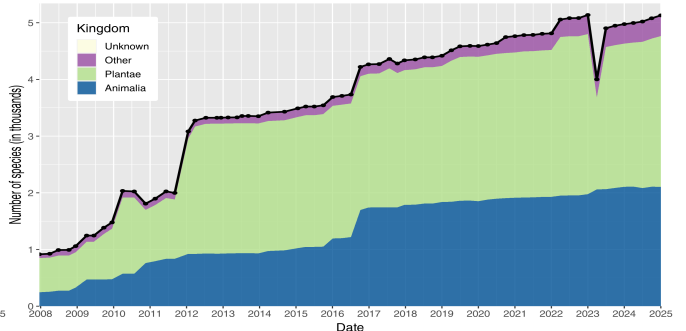
### Change over time in records about biodiversity in Lesotho

Species occurrence records accessible through GBIF over time



Occurrence records available about species occurring  
in Lesotho

Number of species having occurrence records accessible through GBIF over time



Species for which at least one occurrence record is  
available in Lesotho

#### WHY MIGHT THE AMOUNT OF MOBILIZED DATA DECREASE?

Datasets are sometimes removed by publishers, but more often decreases in the number of records are due to the removal of duplicate records and datasets.

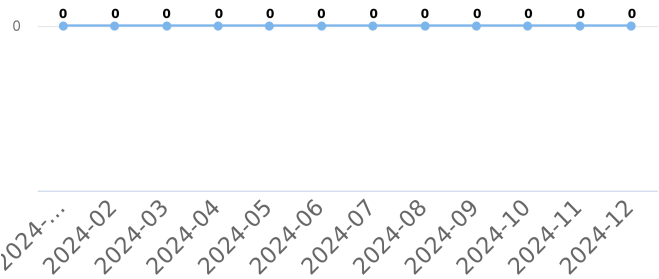
**SPECIES COUNTS** represent the number of binomial scientific names for which GBIF has received data records, organized as far as possible using synonyms recorded in key databases like the Catalogue of Life



Newest publishers from Lesotho

No data available

Occurrence records downloaded from GBIF.org, published by institutions in Lesotho



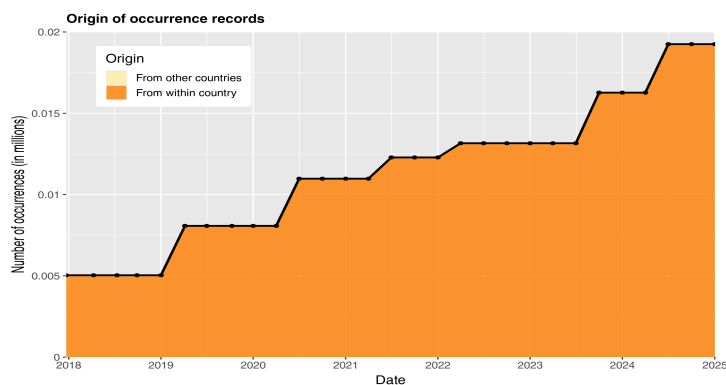
See all publishers from this country or area  
[gbif.org/publisher/search?country=LS](https://gbif.org/publisher/search?country=LS)

Number of occurrence records downloaded via GBIF.org published by institutions in Lesotho

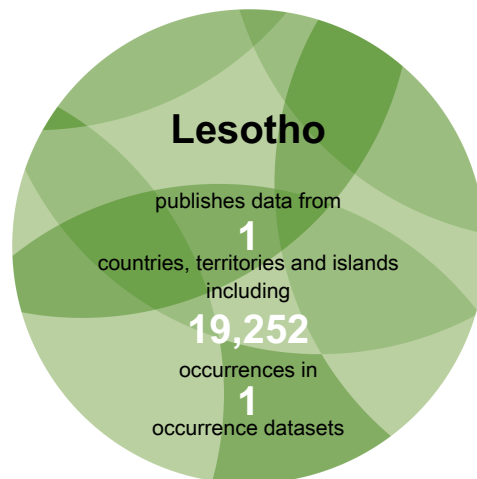


## Data mobilization

### Data sharing with country or area of origin by national institutions in Lesotho



Data sharing with country or area of origin



The chart above shows the number of records shared over time by publishers within Lesotho, with separate colours for records about species occurring within undefined and those occurring elsewhere.

### Top data contributors about biodiversity in Lesotho

Rank	Country or area	No. of occurrences
1	South Africa	92,158
2	Lesotho	19,252
3	United States of America	5,753
4	United Kingdom	3,831
5	Sweden	2,059
6	Netherlands	1,519
7	International organization or unknown country	1,365
8	France	938
9	Switzerland	654
10	Colombia	493

Table 1. Ranking of countries or areas contributing data about Lesotho

### Top datasets contributing data about Lesotho

- Southern African Bird Atlas Project 2. 32,597 occurrences in Lesotho. (Last updated 2 Jan 2025)
- Southern African Bird Atlas Project. 26,739 occurrences in Lesotho. (Last updated 6 Mar 2018)
- EOD – eBird Observation Dataset. 19,252 occurrences in Lesotho. (Last updated 27 Sep 2024)
- Botanical Database of Southern Africa (BODATSA): Botanical Collections. 17,758 occurrences in Lesotho. (Last updated 11 Dec 2024)
- AM: Terrestrial Insect Collections (1896-2000). 4,728 occurrences in Lesotho. (Last updated 22 Nov 2017)

See all contributing countries and areas or datasets: [gbif.org/country/LS/about](https://gbif.org/country/LS/about)